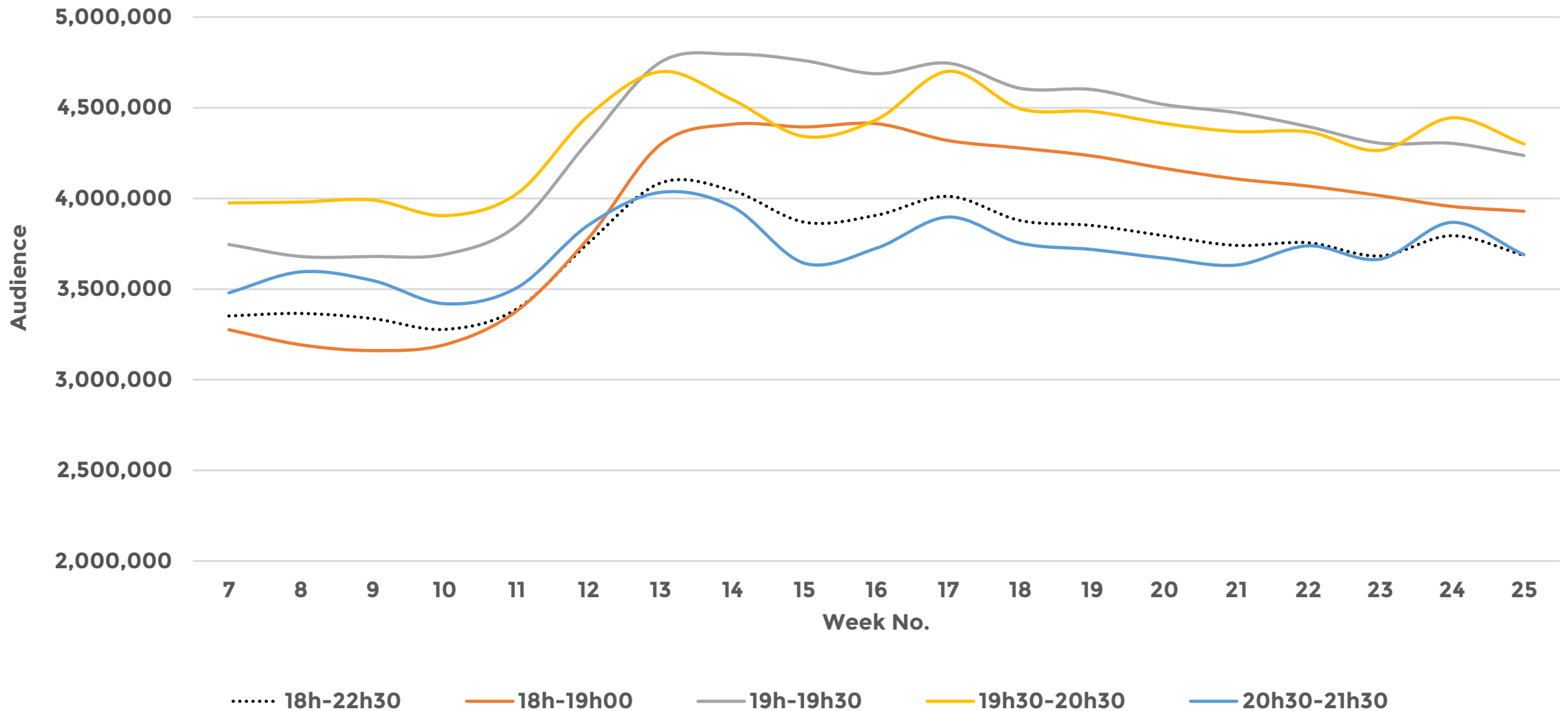


Weekly Tracking Data

TRACKING AUSTRALIA'S TV CONSUMPTION THROUGH COVID19

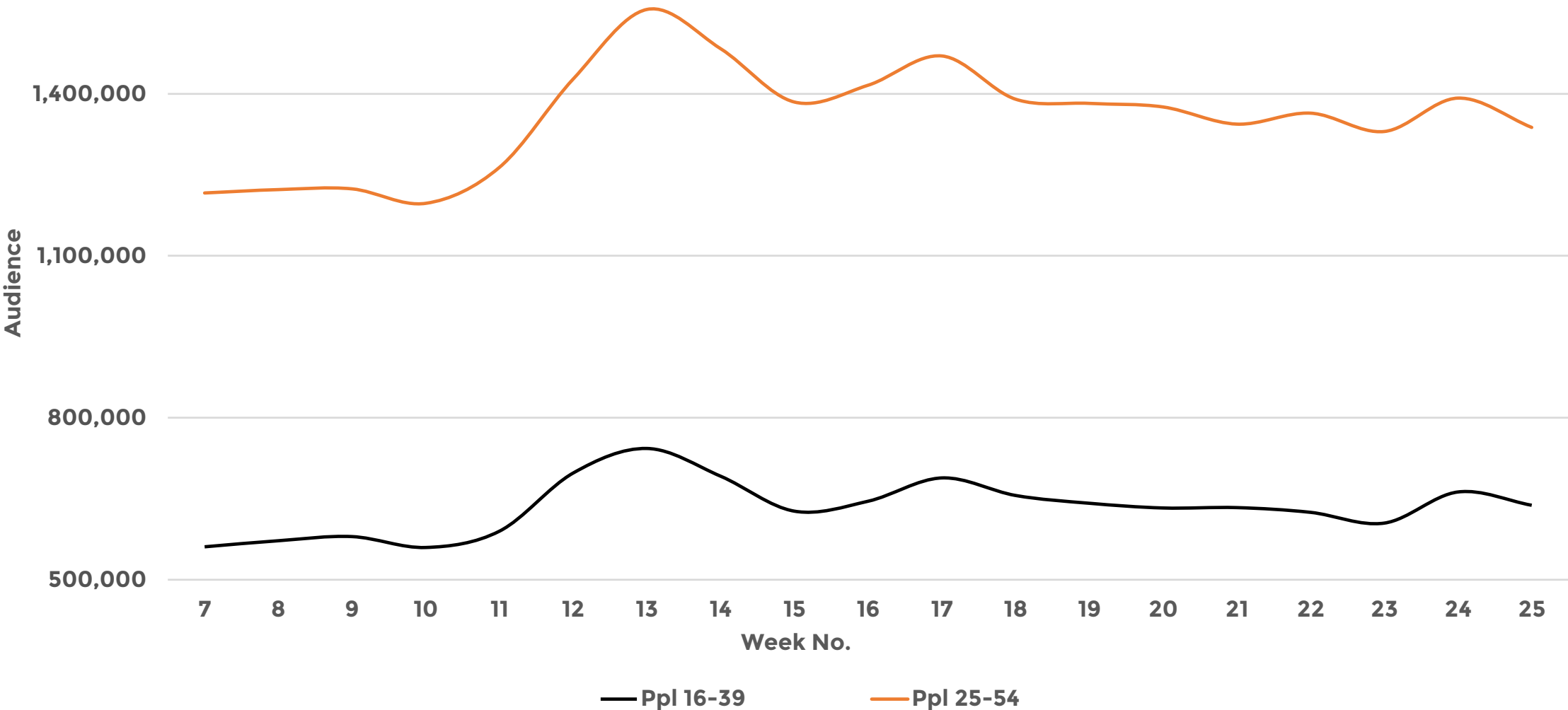
WEEK 25 2020 (14/06/2020 to 20/06/2020)

Timeslot Viewing in Primetime | 5 City Metro | Total TV, Total People



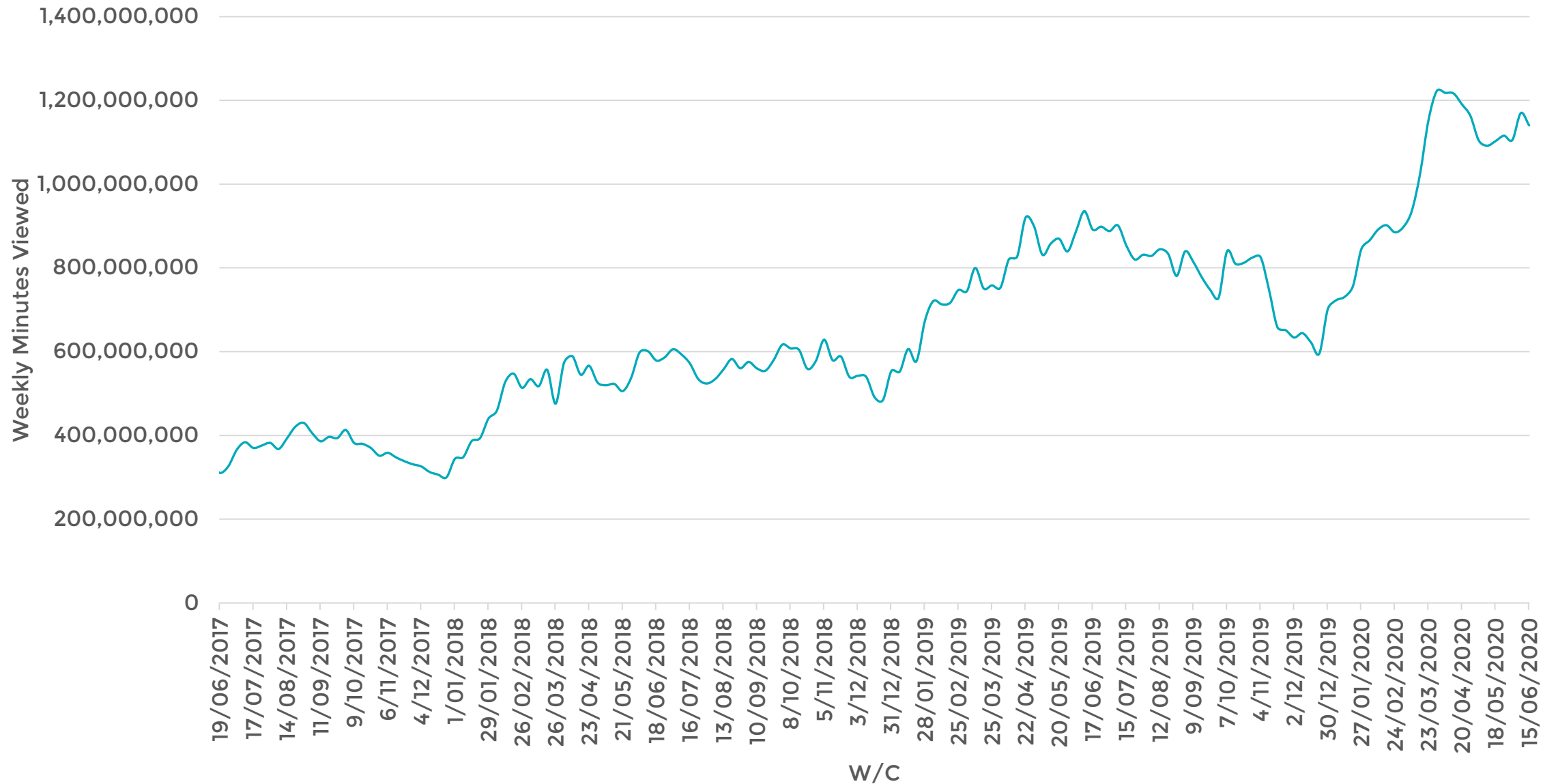
Source: OzTAM Metro Overnights 5CM, Total TV

Key Demographic Viewing Levels in Primetime | 5 City Metro | Total TV



Source: OzTAM Metro Overnights 5CM, Total TV; 18h00-22h30

Broadcaster Weekly Minutes Viewed



Source: OzTam VPM June 2017-June 2020 Live & VOD FTA+Foxtel Minutes

Linear TV and BVOD | Week on Week Movement (%)

Linear TV		wk8-11 2020	wk24 2020	Wk25 2020	Wk25 v Wk24	Wk25 v Wk8-11
Total Individuals	ALL DAY (02h-02h00)	1,301,000	1,441,000	1,401,000	-2.8%	6.1%
	07h-09h00	971,000	994,000	987,000	-0.7%	0.6%
	09h-18h00	1,143,000	1,281,000	1,246,000	-2.7%	8.3%
	18h-22h30	3,343,000	3,794,000	3,686,000	-2.9%	8.2%
Ppl 16-39	ALL DAY (02h-02h00)	205,000	227,000	219,000	-3.7%	4.3%
	07h-09h00	137,000	136,000	127,000	-6.5%	-7.7%
	09h-18h00	163,000	180,000	173,000	-4.2%	5.1%
	18h-22h30	576,000	663,000	638,000	-3.7%	8.3%
Ppl 25-54	ALL DAY (02h-02h00)	460,000	506,000	484,000	-4.4%	2.7%
	07h-09h00	319,000	331,000	318,000	-3.9%	-2.3%
	09h-18h00	364,000	405,000	384,000	-5.0%	4.2%
	18h-22h30	1,227,000	1,392,000	1,338,000	-3.9%	6.6%
BVOD		wk8-11 2020	wk24 2020	wk25 2020	Wk25 v Wk24	Wk25 v Wk8-11
BVOD Minutes	ALL DAY	904,814,000	1,169,733,000	1,140,264,047	-2.5%	26.0%

Commercial channel news slots | Audience change week on week

		Work Week					
Day Part	Target \ Week No.	wk8-11 2020	wk24 2020	wk25 2020	Wk25 v Wk24	Wk25 v Wk8-11	
Shareholder News Slots (wkday)	05h30-07h00	Total Individuals	110,000	99,000	98,000	-1.2%	-11.3%
		Ppl 0-17	4,000	3,000	3,000	19.2%	-15.4%
		Ppl 18-24	1,000	0	1,000	16.4%	-60.6%
		Ppl 25-54	47,000	41,000	39,000	-4.4%	-17.2%
		Ppl 55+	58,000	55,000	55,000	0.1%	-5.2%
	07h-09h00	Total Individuals	231,000	235,000	232,000	-1.3%	0.4%
		Ppl 0-17	13,000	11,000	12,000	5.7%	-10.4%
		Ppl 18-24	2,000	1,000	2,000	72.3%	-9.5%
		Ppl 25-54	80,000	87,000	83,000	-4.6%	3.3%
		Ppl 55+	135,000	135,000	135,000	-0.4%	-0.1%
	17h-18h00	Total Individuals	355,000	412,000	383,000	-7.1%	7.8%
		Ppl 0-17	13,000	22,000	17,000	-20.9%	30.6%
		Ppl 18-24	6,000	7,000	8,000	4.0%	21.6%
		Ppl 25-54	111,000	145,000	124,000	-14.5%	11.4%
		Ppl 55+	224,000	238,000	234,000	-1.6%	4.3%
	18h-19h00	Total Individuals	855,000	1,048,000	1,009,000	-3.7%	17.9%
		Ppl 0-17	38,000	57,000	50,000	-13.4%	31.0%
		Ppl 18-24	17,000	21,000	21,000	-0.2%	24.8%
		Ppl 25-54	232,000	304,000	291,000	-4.0%	25.6%
		Ppl 55+	568,000	666,000	646,000	-2.9%	13.7%

Source: OzTAM Metro Overnights 5CM, Shareholder News Slots (05h30-09h00- ch7,9; 17h-18h00-ch10; 18h-19h00- ch7,9)