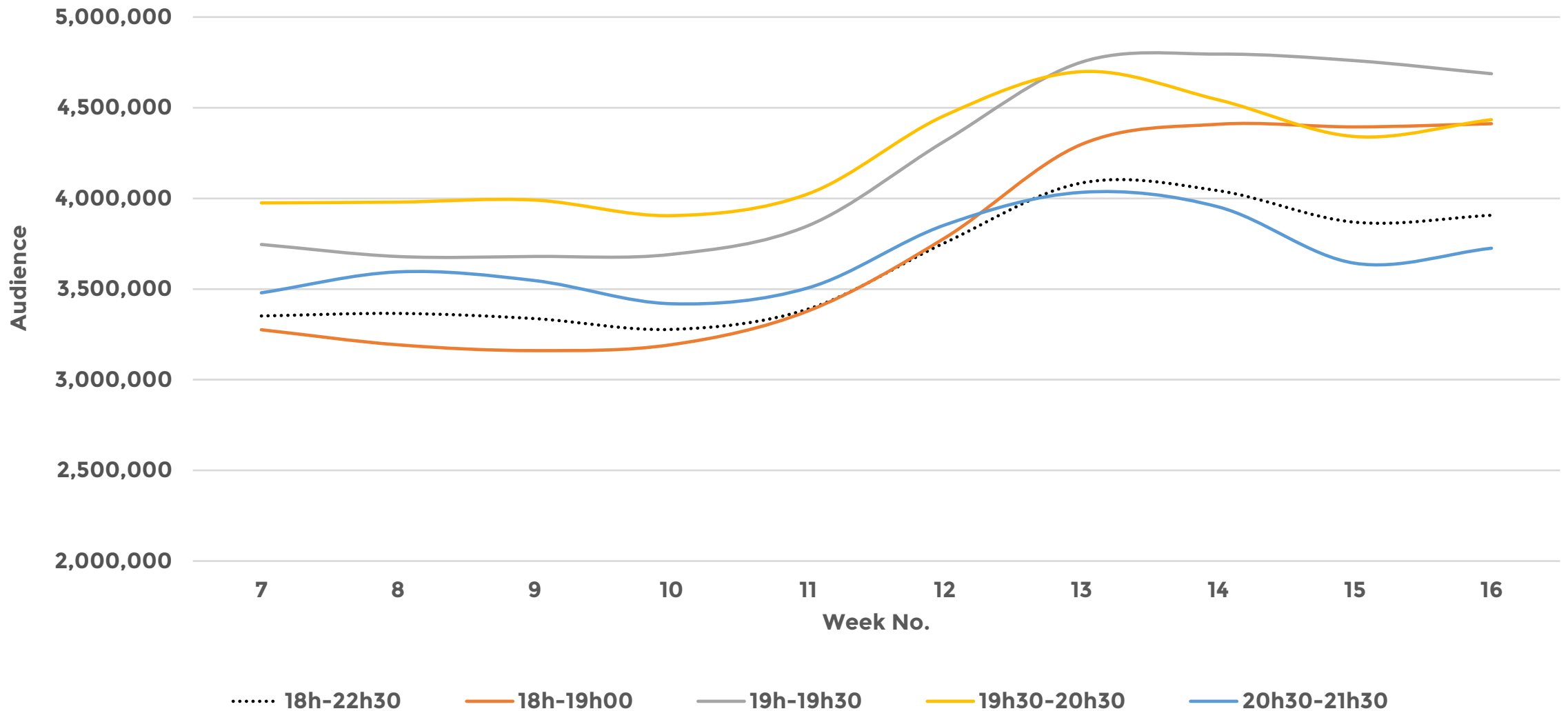


Weekly TV Viewing Data

TRACKING AUSTRALIA'S TV CONSUMPTION THROUGH COVID19

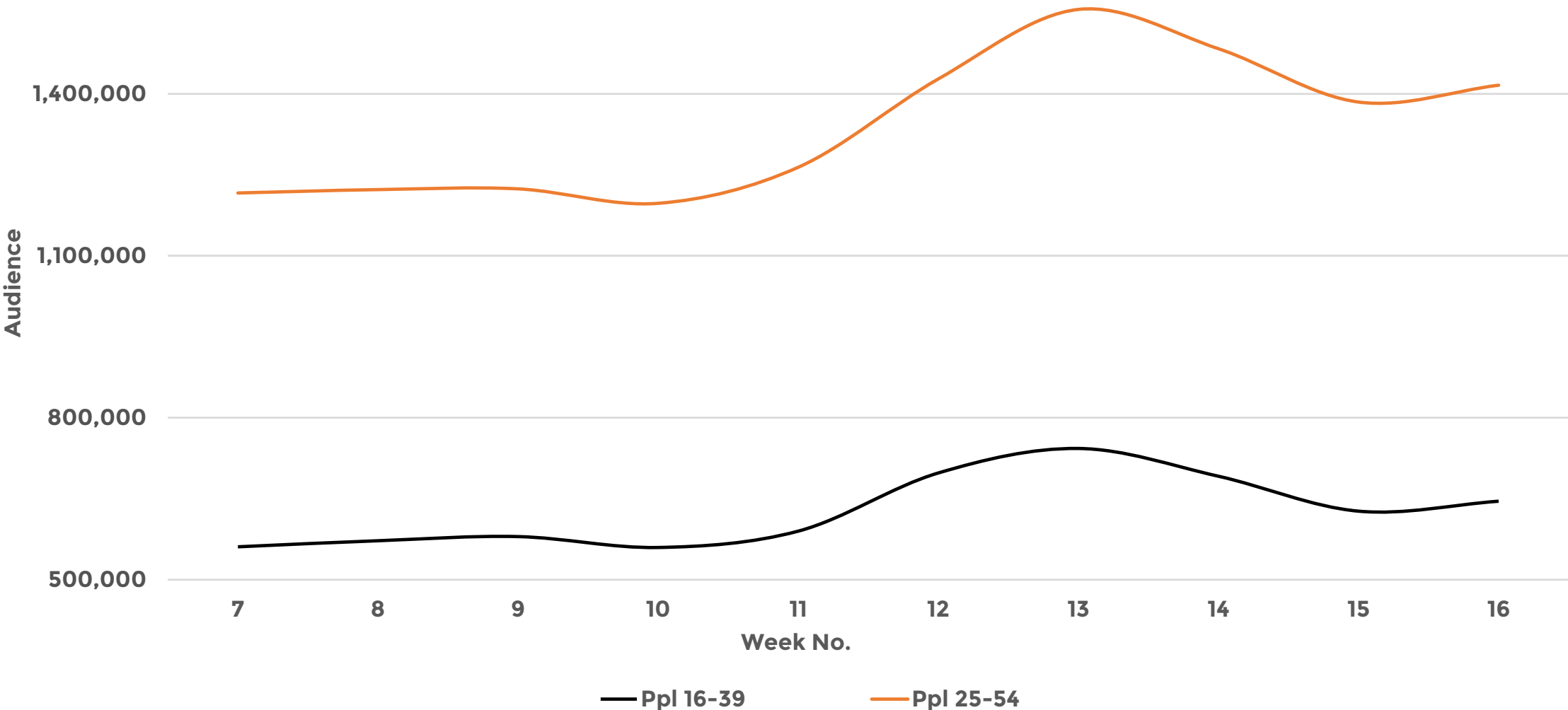
WEEK 16 2020 (12/04/2020 to 18/04/2020)

Timeslot Viewing in Primetime | 5 City Metro | Total TV, Total People



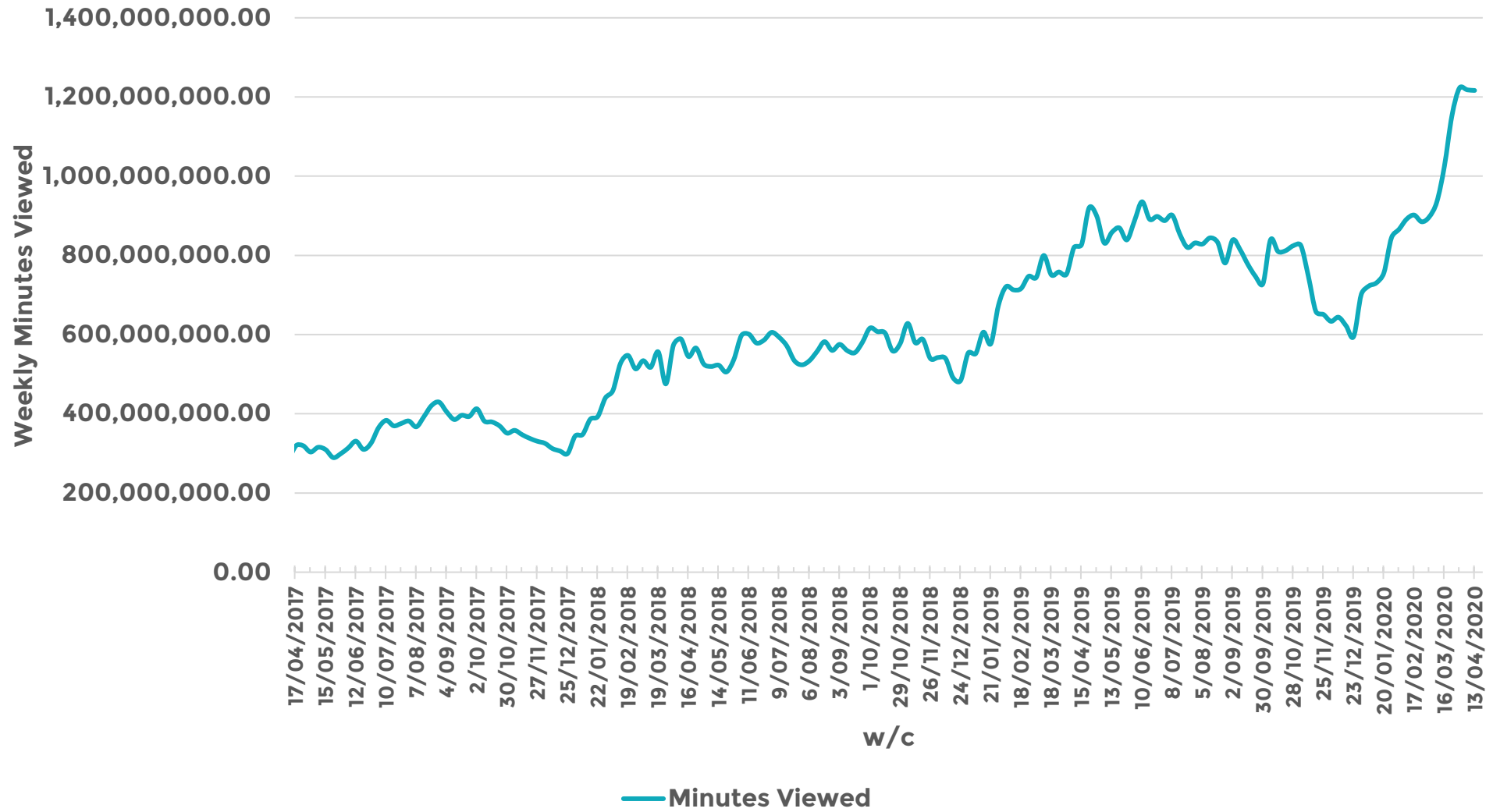
Source: OzTAM Metro Overnights 5CM, Total TV

Key Demographic Viewing Levels in Primetime | 5 City Metro | Total TV



Source: OzTAM Metro Overnights 5CM, Total TV; 18h00-22h30

Broadcaster Weekly Minutes Viewed



Source: OzTam VPM Apr 2017-Apr 2020 Live & VOD FTA+Foxtel Minutes

Linear TV and BVOD | Week on Week Movement (%)

Linear TV		wk8-11 2020	wk15 2020	wk16 2020	Wk16 v Wk15	Wk16 v Wk8-11
Total Individuals	ALL DAY (02h-02h00)	1,301,000	1,630,000	1,594,000	-2.3%	22.5%
	07h-09h00	971,000	1,304,000	1,212,000	-7.0%	24.8%
	09h-18h00	1,143,000	1,637,000	1,543,000	-5.8%	35.1%
	18h-22h30	3,343,000	3,869,000	3,907,000	1.0%	16.9%
Ppl 16-39	ALL DAY (02h-02h00)	205,000	247,000	243,000	-1.6%	18.7%
	07h-09h00	137,000	196,000	181,000	-7.6%	32.2%
	09h-18h00	163,000	229,000	213,000	-6.6%	30.8%
	18h-22h30	576,000	627,000	646,000	2.9%	12.1%
Ppl 25-54	ALL DAY (02h-02h00)	460,000	569,000	557,000	-2.1%	20.9%
	07h-09h00	319,000	456,000	418,000	-8.3%	31.0%
	09h-18h00	364,000	531,000	492,000	-7.4%	35.3%
	18h-22h30	1,227,000	1,385,000	1,416,000	2.3%	15.4%
BVOD		wk8-11 2020	wk15 2020	wk16 2020	Wk16 v Wk15	Wk16 v Wk8-11
BVOD Minutes	ALL DAY	904,814,000	1,218,065,000	1,216,505,000	-0.1%	34.4%

Commercial channel news slots | Audience change week on week

		Work Week					
Day Part	Target \ Week No.	wk8-11 2020	wk15 2020	wk16 2020	Wk16 v Wk 15	Wk16 v Wk8-11	
Shareholder News Slots (wkday)	05h30-07h00	Total Individuals	110,000	113,000	95,000	-15.7%	-13.8%
		Ppl 0-17	4,000	3,000	2,000	-39.2%	-56.2%
		Ppl 18-24	1,000	1,000	1,000	-40.0%	-52.8%
		Ppl 25-54	47,000	43,000	35,000	-18.9%	-25.7%
		Ppl 55+	58,000	66,000	58,000	-12.2%	-0.4%
	07h-09h00	Total Individuals	231,000	297,000	269,000	-9.3%	16.5%
		Ppl 0-17	13,000	16,000	12,000	-21.4%	-7.5%
		Ppl 18-24	2,000	3,000	2,000	-41.5%	-29.3%
		Ppl 25-54	80,000	114,000	104,000	-8.9%	29.1%
		Ppl 55+	135,000	164,000	152,000	-7.9%	12.2%
	17h-18h00	Total Individuals	355,000	522,000	507,000	-2.9%	42.8%
		Ppl 0-17	13,000	25,000	28,000	10.2%	110.2%
		Ppl 18-24	6,000	8,000	10,000	26.6%	61.6%
		Ppl 25-54	111,000	192,000	177,000	-7.9%	59.1%
		Ppl 55+	224,000	297,000	292,000	-1.6%	30.3%
	18h-19h00	Total Individuals	855,000	1,170,000	1,174,000	0.3%	37.3%
		Ppl 0-17	38,000	62,000	61,000	-2.0%	59.8%
		Ppl 18-24	17,000	26,000	25,000	-3.3%	45.6%
		Ppl 25-54	232,000	350,000	352,000	0.5%	52.0%
		Ppl 55+	568,000	732,000	736,000	0.6%	29.6%

Source: OzTAM Metro Overnights 5CM, Shareholder News Slots (05h30-09h00- ch7,9; 17h-18h00-ch10; 18h-19h00- ch7,9)